



# ICONIC ENGINEERING

*Finest Quality & Reliable Performance*



Mfg. Mechanical Seals ,Rotary Joint, Sealing System & Rubber Products .



## INDUSTRIAL WE SERVE

- » Pharmaceutical
- » Chemical
- » Petrochemical
- » Oil & Gas
- » Refinery
- » Power Fertiliser
- » Pulp & Paper
- » Textile
- » Marine
- » Foods & Beverages



## Introduction

Iconic Engineering Est in the Year 2011 is engaged in the Design Manufacture & installation of Mechanical seal Rotary Joint(Roto Coupling , Rotary Union ) & Pharma Rubber Products and associated products to cater the growing needs of process industries

## About Us

We are one of the Leading Providers of industrial sealing technology on national & international Stage. Our Products and Comprehensive Service are used wherever the key requirements are reliability and safety Iconic Engineering Design and Manufacture Mechanical Seal, Rotary Joint Pharma Rubber and associated product mainly for the Oil & gas, Chemical, Pharmaceutical, Pulp & Paper, Power, Food, Textile, Petrochemical, Steel, Marine, and many more industrial application Iconic Engineering can help relieve stress reduce the life cycle cost Associated with the most important aspect of plant operation Iconic Engineering has a longstanding tradition of provided Mechanical Seal, Rotary Joint, Pharma Rubber & sealing Service that are trusted by the industry.

## Quality

We mean what we say when we talk about quality. Designing and manufacturing Mechanical Seal, Rotary Joint, & pharma Rubber Products auxiliaries that exceeds our customer expectations is an important part of our dedication of total quality

## Service

Staff is available to resolve customer problems. Our Engineers have great experience and technical knowledge of Mechanical Seal Rotary Joint, Seal Support System, Rotating equipment & Pharma Rubber Products. Which enables them to quickly Point out the root cause accurately



# MECHANICAL SEAL



## Rubber Bellow seal

<b>Face Materials</b>	Silicon Carbide, Carbon, Tungsten Carbide, Ceramic
<b>Metal Parts</b>	AISI SS 316, AISI SS 304
<b>Seal Elastomer</b>	Viton, EPDM, NBR
<b>Applications</b>	Water Pumps, Submersible Pumps, Sewage pump
<b>Operating Limits</b>	Shaft Diameter d1 :10....100mm Pressure p : 10 bar (max) temperature : -20....+180°C Speed: 3000 r.p.m

## Rubber Bellow seal

<b>Face Materials</b>	Silicon Carbide, Carbon, Tungsten Carbide, Ceramic
<b>Metal Parts</b>	AISI SS 316, AISI SS 304
<b>Seal Elastomer</b>	Viton, EPDM, NBR
<b>Applications</b>	Water Pumps, Submersible Pumps, Sewage pump
<b>Operating Limits</b>	Shaft Diameter d1 :10....100mm Pressure p : 10 bar (max) temperature : -20....+180°C Speed: 3000 r.p.m



## Conical Coil Single Spring seal



<b>Face Materials</b>	Carbon, Ceramic, Tungsten Carbide, Silicon Carbide, Lecrolloy
<b>Metal Parts</b>	AISI SS 316, AISI SS 304, HASTELLOY-C, ALLOY-20
<b>Seal Elastomer</b>	Viton, EPDM, Silicon, Aflas, PTFE, GFT, Karlez, FEP, TTV
<b>Applications</b>	Water Pumps, Circulation Pumps for Central heating Chemical Process Pumps, Sewage & Submersible Pumps
<b>Operating Limits</b>	Shaft Diameter d1 :12....90mm Pressure p : 08 bar (max) temperature : -20....+180°C Speed: 3000 r.p.m





## Single Coil Spring seal

<b>Face Materials</b>	Carbon, Ceramic, Tungsten Carbide, Silicon Carbide, Lecrolloy
<b>Metal Parts</b>	AISI SS 316, AISI SS 304, HASTELLOY-C, ALLOY-20
<b>Seal Elastomer</b>	Viton, EPDM, Silicon, Aflas, GFT, Karlez, FEP, TTV, PTFE
<b>Applications</b>	Crystallizing Slurry, Suspended Solids Slurry, Saturated Chemical Slurry, General Chemical Slurry
<b>Operating Limits</b>	Shaft Diameter d1 :12....100mm Pressure p : 12 bar (max) temperature : -20....+180°C Speed: 3000 r.p.m

## Multi Spring seal

<b>Face Materials</b>	Carbon, Ceramic, Silicon Carbide, Tungsten Carbide
<b>Metal Parts</b>	AISI SS 316, AISI SS 304, HASTELLOY-C, ALLOY-20
<b>Seal Elastomer</b>	Viton, EPDM, Silicon, Aflas, PTFE, GFT, Karlez, FEP, TTV
<b>Applications</b>	Light Hydrocarbons, Corrosive Services, Acids & Alkalies, Petrochemicals etc.
<b>Operating Limits</b>	Shaft Diameter d1 :20....100mm Pressure p : 20 bar (max) temperature : +180°C Speed: 3000 r.p.m



## PTFE Bellow seal

<b>Face Materials</b>	GFT, Ceramic, Silicon Carbide, CFT
<b>Metal Parts</b>	AISI SS 316, AISI SS 304, HASTELLOY-C, ALLOY-20
<b>Seal Elastomer</b>	PTFE
<b>Applications</b>	Extremely Corrosive Services
<b>Operating Limits</b>	Shaft Diameter d1 :18....100mm Pressure p : 06 bar (max) temperature : -30....+120°C Speed: 3000 r.p.m





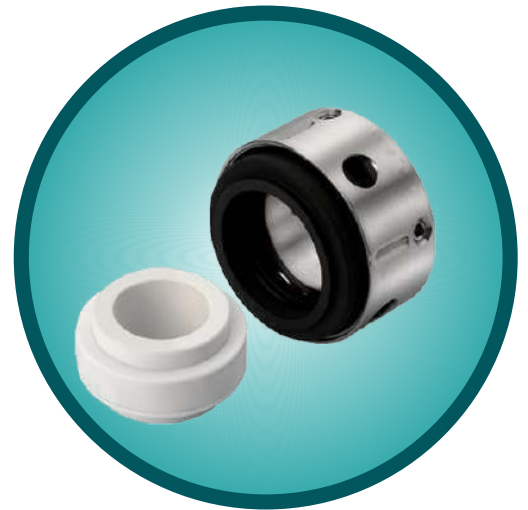


## Ptfe Bellow With Replaceable Face

<b>Face Materials</b>	GFT, Ceramic, Silicon Carbide, CFT
<b>Metal Parts</b>	AISI SS 316, AISI SS 304, HASTELLOY-C, ALLOY-20
<b>Seal Elastomer</b>	PTFE
<b>Applications</b>	Extremely Corrosive Services
<b>Operating Limits</b>	Shaft Diameter d1 :18....100mm Pressure p : 06 bar (max) temperature : -30....+120°C Speed: 3000 r.p.m

## Reverse Balance Multi Spring Seal

<b>Face Materials</b>	Carbon, Ceramic, Silicon Carbide, Tungsten Carbide
<b>Metal Parts</b>	AISI SS 316, AISI SS 304, HASTELLOY-C, ALLOY-20
<b>Seal Elastomer</b>	Viton, EPDM, TTV, FEP and FKM
<b>Applications</b>	Light Hydrocarbons, Corrosive Services, Acids & Alkalies, Petrochemicals etc.
<b>Operating Limits</b>	Shaft Diameter d1 :12....70mm Pressure p : 08 bar (max) temperature Upto....+120°C Speed: 3000 r.p.m



## Metal Bellow Seal

<b>Face Materials</b>	Carbon, Silicon Carbide, Tungsten Carbide.
<b>Metal Parts</b>	AISI SS 316, AISI SS 304, Carpenter 42 Hast- C, Am350, Inconel
<b>Seal Elastomer</b>	Grafoil, Viton, CFT, KARLEZ.
<b>Applications</b>	Chemicals, Petrochemical, Refinery, Corrosive Chemical, Extreme Hot Media.
<b>Operating Limits</b>	Shaft Diameter d1 :25....100mm Pressure p : 25 bar (max) temperature : -70....+350°C Speed: 3000 r.p.m





## Grundfos Seal

<b>Face Materials</b>	Carbon, Ceramic, Silicon Carbide, Tungsten Carbide
<b>Metal Parts</b>	AISI SS 316, AISI SS 304
<b>Seal Elastomer</b>	Viton, EPDM, Nitrile
<b>Applications</b>	Slurry pump, Pulp & paper, Sludge & Syrup pump, Chemical, Petrochemical & Refinery
<b>Operating Limits</b>	Shaft Diameter d1 :12....22mm Pressure p : 05 bar (max) temperature : -45....+180°C

## Single Spring Seal

<b>Face Materials</b>	Carbon, Ceramic, Tungsten Carbide, Silicon Carbide, Lecrolloy
<b>Metal Parts</b>	AISI SS 316, AISI SS 304, HASTELLOY-C, ALLOY-20
<b>Seal Elastomer</b>	Viton, EPDM, Silicon, Aflas, GFT, Karlez, FEP, TTV, PTFE
<b>Applications</b>	Crystallizing Slurry, Suspended Solids Slurry, Saturated Chemical Slurry, General Chemical Slurry
<b>Operating Limits</b>	Shaft Diameter d1 :12....100mm Pressure p : 12 bar (max) temperature : -20....+180°C Speed: 3000 r.p.m



## Single Cartridge Seal



<b>Face Materials</b>	Carbon, Tungsten Carbide, Silicon Carbide
<b>Metal Parts</b>	AISI SS 316, AISI SS 304, Carpenter 42
<b>Seal Elastomer</b>	Viton, EPDM, Silicon, Aflas, PTFE, GFT, Karlez, FEP, TTV
<b>Applications</b>	Slurry pump, Pulp & paper, Sludge & Syrup pump, Chemical, Petrochemical, Refinery, Light Hydrocarbons.
<b>Operating Limits</b>	Shaft Diameter d1 :18....100mm Pressure p : 5....35 bar (max) temperature : -20....+260°C Speed : 3000 r.p.m





## Dual Cartridge Seal

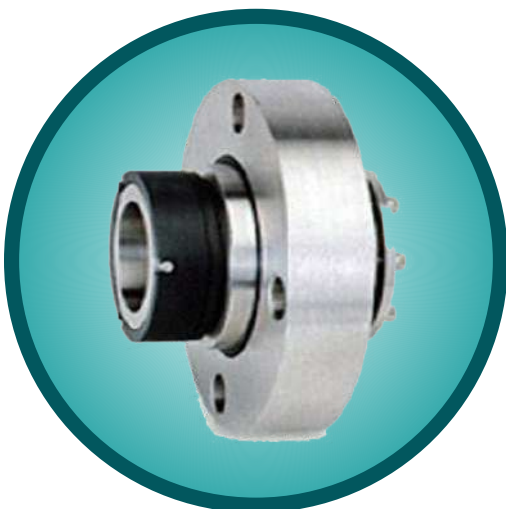
<b>Face Materials</b>	Carbon, Silicon Carbide, Tungsten Carbide, Lacroloy
<b>Metal Parts</b>	AISI SS 316, AISI SS 304, HASTELLOY-C, ALLOY-20 etc.
<b>Seal Elastomer</b>	Viton, EPDM, Silicon, Aflas, PTFE, GFT, Karlez, FEP, TTV
<b>Applications</b>	Slurry pump, Pulp & paper, Sludge & Syrup pump, Chemical, Petrochemical & Refinery
<b>Operating Limits</b>	Shaft Diameter d1 :18...100mm Pressure p : 05...35 bar (max) temperature : -20.....260°C Speed: 3000 r.p.m

## Metal Bellow Cartridge Seal

<b>Face Materials</b>	Carbon, Silicon Carbide, Tungsten Carbide.
<b>Metal Parts</b>	AISI SS 316, AISI SS 304, Carpenter 42 Hast- C, Am350, Inconel
<b>Seal Elastomer</b>	Grafoil, Viton, CFT, KARLEZ.
<b>Applications</b>	Chemicals, Petrochemical, Refinery, Corrosive Chemical, Extreme Hot Media.
<b>Operating Limits</b>	Shaft Diameter d1 :25...100mm Pressure p : 25 bar (max) temperature : -70....+350°C Speed: 3000 r.p.m



## Slurry Seal



<b>Face Materials</b>	Carbon, Silicon Carbide
<b>Metal Parts</b>	SS 316, SS 304
<b>Seal Elastomer</b>	Viton, EPDM, Silicon, Aflas, PTFE, GFT, Karlez, FEP, TTV
<b>Applications</b>	Slurry pump, Pulp & paper, Sludge & Syrup pump, Chemical, Petrochemical & Refinery
<b>Operating Limits</b>	Shaft Diameter d1 :18...100mm Pressure p : 5.....25 bar (max) temperature : -40....+260°C Speed : 3000 r.p.m



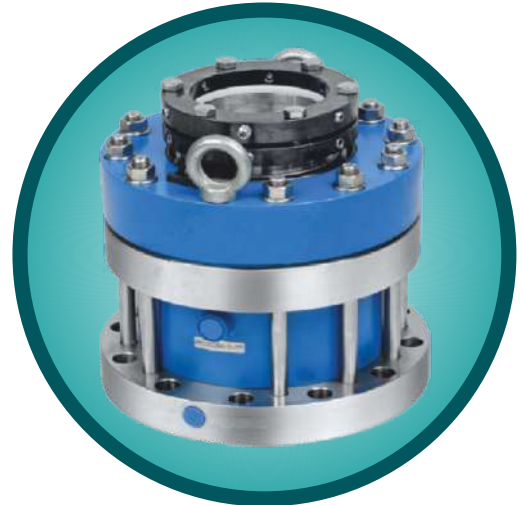


## Dry Running Seal

<b>Face Materials</b>	Carbon , Silicon Carbide, Tungsten carbide, Ceramic
<b>Metal Parts</b>	AISI SS 316, AISI SS 304, MS Etc.,
<b>Seal Elastomer</b>	Viton, EPDM, Silicon, Aflas, PTFE, GFT, Karlez, FEP, TTV
<b>Applications</b>	Corrosive Chemicals, General Light Chemicals, Food Product, Pharmaceutical Products.
<b>Operating Limits</b>	Shaft Diameter d1 :15....150mm Pressure p : 08 bar (max) temperature : -30.....150°C Speed: 3000 r.p.m

## Dual Agitator Seal

<b>Face Materials</b>	Carbon, Silicon Carbide, Tungsten Carbide, Lacroloy, Ceramic.
<b>Metal Parts</b>	AISI SS 316, AISI SS 304, HASTELLOY-C, ALLOY-20 etc.
<b>Seal Elastomer</b>	Viton, EPDM, Silicon, Aflas, PTFE, GFT, Karlez, FEP, TTV
<b>Applications</b>	General Chemicals & It's Vapours, Petrochemicals & It's Vapours, Light Hydrocarbons & It's Vapours, Pharmaceutical & Industries, Paper Industries Etc.
<b>Operating Limits</b>	Shaft Diameter d1 :25....200mm Pressure V.....30 bar (max) temperature : -30....+260°C Speed: 3000 r.p.m



## Thermosyphon Vessel

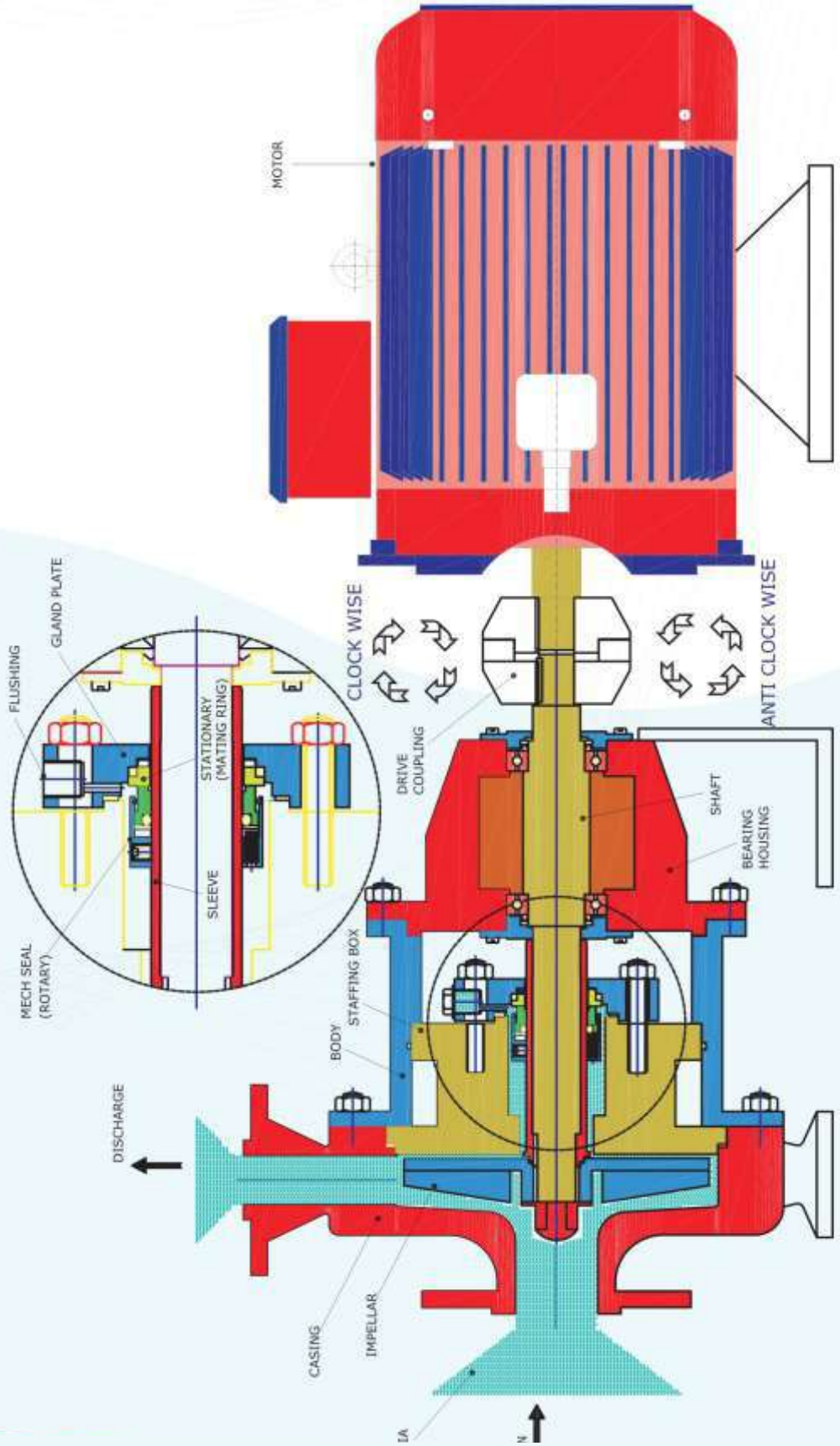
<b>Metal Parts</b>	Thermosyphon Shell : Carbon Steel / SS 304 / SS 316 / MS Cooling Coil : SS 304 / SS 316
<b>Operating Limits</b>	20 Pressure Limit : 20 bar 40 Pressure Limit : 40 bar Temperature (max) : 200°C





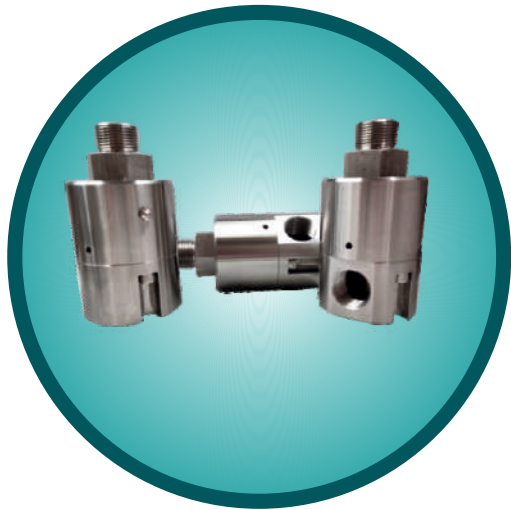
# PUMP PROCESS SYSTEM

## SEAL FITMENT & PUMP PROCESS SYSTEM



# ROTARY JOINT

All Types of Rotary Joint, Rotary Union & Roto Seal Couplings.



## Rotary Joint Water Application

Face Materials	Carbon, Silicon Carbide, Tungsten Carbide, Stellite
Metal Parts	SS 316, SS 304, Brass
Seal Elastomer	Viton, Silicon, TTV, PTFE.
Operating Limits	SIZE : 3/8" To 6.0" Pressure : 15 Bar temperature : 150° C Speed: 3500 RPM



## Rotary Joint for Air Application

Face Materials	Carbon, Silicon Carbide, Tungsten Carbide, Stellite,
Metal Parts	Aluminium
Seal Elastomer	Viton, PTFE.
Operating Limits	SIZE : 3/8" To 6.0" Pressure : 10 Bar Air, 0.07 Bar to 7 Kpa Vacuum Temperature : 150° C Speed: 2800 RPM



# ROTARY JOINT

All Types of Rotary Joint, Rotary Union & Roto Seal Couplings.

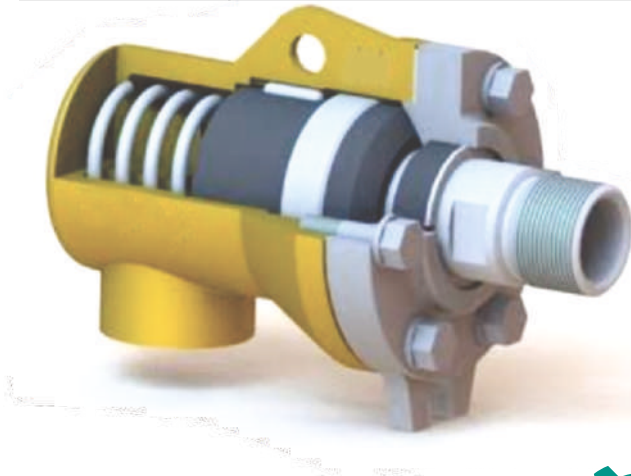


## Hydraulic Rotary Joint

<b>Metal Parts</b>	SS 316, SS 304, Brass, Gun Metal.
<b>Seal Elastomer</b>	Viton, PTFE.
<b>Operating Limits</b>	SIZE : 3/8" To 6.0" Pressure : 400 Bar temperature : 150° C Speed: 1500 RPM

## Rotary Joint for Hot Oil & Thermic Fluid

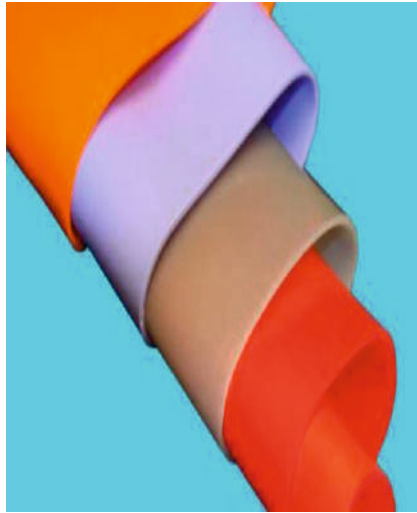
<b>Face Materials</b>	Antimony Carbon.
<b>Metal Parts</b>	MS, SS 304
<b>Seal Elastomer</b>	Grafoil Gasket, Asbestos Gasket.
<b>Operating Limits</b>	SIZE : 0.5" to 6.0" Pressure : 07 Bar Temperature : 350° C Speed: 750 RPM





# RUBBER PRODUCTS

## SILICONE EXTRUSION





# RUBBER PRODUCTS



Rubber Sheet



Silicone Sponge



FBD Gasket



Butter Fly Gaskets



PTFE Coated Diaphragms



Rubber Diaphragms



O Rings



Rubber Expansion Bellow



# SILICONE MOULDED PRODUCTS



# INFLATABLE SEALS



Iconic Engineering Inflatable seals are made from special grade silicone which inflates to offer contamination proof of sealing in Pharmaceutical application. Inflatable seals are designed specifically to form a tight barrier between the mounting and closer surfaces. The use of inflatable seal is simple & also 100% sealing guaranteed within less inflation force. Inflatable seal is manufactured from special grade silicone confirming FDA standards

The Inflation of gaskets is about 10mm to 20mm on application of working pressure 2 kg/cm<sup>2</sup> to 4kg/cm<sup>2</sup>

## APPLICATIONS

- Power handling industry
- Pharmaceutical industry
- Food and beverage industry
- Marine & Aerospace

## CONSTRUCTION

- Perfect sealing property
- Rugged design
- Dimensional accuracy

## INFLATE & DEFLATE DIRECTION

- Axial
- Radial - Inward
- Radial - Outward

## AVAILABLE SHAPES

- **Circular**
- Rectangle with 90 degree angle
- Rectangle with U-Shape



## AVAILABLE NOZEL



# TRI-CLOVER GASKET (TC GASKET)

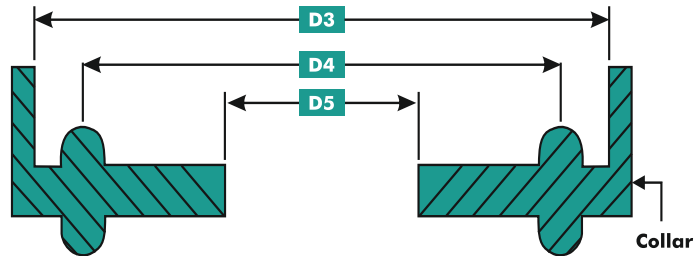


Iconic Engineering offers its tri-clamp gaskets in Silicone Rubber (VMQ/MVQ) & also in (Viton) Rubber (FKM).

Silicone TC Gasket is available in white, blue, red, black & transparent. Silicone Tri Clamp Gasket is available with Collar, and also without Collar, conforming to USO standards (FDA 21 CFR 177.2600)

## STANDARD SIZE

NORMAL SIZE	D3	D4	D5
1/2"	34.0	27.5	10.9
1/2" A (Mini)	22.0	17.0	09.5
3/4"	34.0	27.5	15.4
1"	50.5	43.5	22.8
1 1/2"	50.5	43.5	35.8
2"	64.0	56.5	48.8
2 1/2"	77.5	70.5	60.5
3"	91.0	83.5	73.1
4"	118.0	110.0	96.0



# AUTOCLAVE GASKET



Silicone Auto-clave door gasket, We offer Silicone door gaskets for variety of applications like Auto-claves, Bakery Ovens Etc. These Extruded door gaskets withstand a temp of -80°C to +250°C and also confirms to FDA 21CFR 177.2600

Auto-clave door gaskets are available for Steam Sterilizer and dry heat sterilizer.





# O-RING'S (SILICONE / FKM / EPDM)



O rings are Used in sealing applications, Basically Static / Dynamic sealing

Materials : Silicone, FKM, Nitrile, Neoprene, EPDM, Poly- Urethane, PTFE etc, O ring used to seal all liquid and gaseous media. The Dimension of Oring are provided by the Inside Diameter (i.d.) and the cross section (c/s)

## ADVANTAGES

- Simple groove design
- Easy fail safe Installation
- applicable to a wide range of static application & Dynamic application in single or double acting cylinder.

# FEP O-RING'S



Is manufactured in base product Silicone or FKM and Encapsulated / Jacketed in FEP. The thin Encapsulation of FEP required elasticity pre tension and dimensional stability is provided by base Elastomer ensures reliable sealing and high resistance to media.

## ADVANTAGES

- Excellent chemical & corrosion resistance
- Temperature range : -60°C to 260°C
- Wide application in Food & Pharmaceuticals and Chemical industries








# ICONIC ENGINEERING

Mfg. Mechanical Seals ,Rotary Joint, Sealing System & Rubber Products .

**Head Office & Factory:-**  
Unit No 01,Shaikh Saheb Compound, R. S Marg,  
Pathanwadi Malad East,Mumbai-400097

 9167844313/ 9699686236  
 [inquiryiconicengg@gmail.com](mailto:inquiryiconicengg@gmail.com)  
 [www.iconicengg.com](http://www.iconicengg.com)