



ICONIC ENGINEERING

Finest Quality & Reliable Performance



Mfg. Mechanical Seals ,Rotary Joint, Sealing System & Rubber Products .



INDUSTRIAL WE SERVE

- » Pharmaceutical
- » Chemical
- » Petrochemical
- » Oil & Gas
- » Refinery
- » Power Fertiliser
- » Pulp & Paper
- » Textile
- » Marine
- » Foods & Beverages



Introduction

Iconic Engineering Est in the Year 2011 is engaged in the Design Manufacture & installation of Mechanical seal Rotary Joint(Roto Coupling , Rotary Union) & Pharma Rubber Products and associated products to cater the growing needs of process industries

About Us

We are one of the Leading Providers of industrial sealing technology on national & international Stage. Our Products and Comprehensive Service are used wherever the key requirements are reliability and safety Iconic Engineering Design and Manufacture Mechanical Seal, Rotary Joint Pharma Rubber and associated product mainly for the Oil & gas, Chemical, Pharmaceutical, Pulp & Paper, Power, Food, Textile, Petrochemical, Steel, Marine, and many more industrial application Iconic Engineering can help relieve stress reduce the life cycle cost Associated with the most important aspect of plant operation Iconic Engineering has a longstanding tradition of provided Mechanical Seal, Rotary Joint, Pharma Rubber & sealing Service that are trusted by the industry.

Quality

We mean what we say when we talk about quality. Designing and manufacturing Mechanical Seal, Rotary Joint, & pharma Rubber Products auxiliaries that exceeds our customer expectations is an important part of our dedication of total quality

Service

Staff is available to resolve customer problems. Our Engineers have great experience and technical knowledge of Mechanical Seal Rotary Joint, Seal Support System, Rotating equipment & Pharma Rubber Products. Which enables them to quickly Point out the root cause accurately



MECHANICAL SEAL



Rubber Bellow seal

Face Materials	Silicon Carbide, Carbon, Tungsten Carbide, Ceramic
Metal Parts	AISI SS 316, AISI SS 304
Seal Elastomer	Viton, EPDM, NBR
Applications	Water Pumps, Submersible Pumps, Sewage pump
Operating Limits	Shaft Diameter d1 :10....100mm Pressure p : 10 bar (max) temperature : -20....+180°C Speed: 3000 r.p.m

Rubber Bellow seal

Face Materials	Silicon Carbide, Carbon, Tungsten Carbide, Ceramic
Metal Parts	AISI SS 316, AISI SS 304
Seal Elastomer	Viton, EPDM, NBR
Applications	Water Pumps, Submersible Pumps, Sewage pump
Operating Limits	Shaft Diameter d1 :10....100mm Pressure p : 10 bar (max) temperature : -20....+180°C Speed: 3000 r.p.m



Conical Coil Single Spring seal



Face Materials	Carbon, Ceramic, Tungsten Carbide, Silicon Carbide, Lecrolloy
Metal Parts	AISI SS 316, AISI SS 304, HASTELLOY-C, ALLOY-20
Seal Elastomer	Viton, EPDM, Silicon, Aflas, PTFE, GFT, Karlez, FEP, TTV
Applications	Water Pumps, Circulation Pumps for Central heating Chemical Process Pumps, Sewage & Submersible Pumps
Operating Limits	Shaft Diameter d1 :12....90mm Pressure p : 08 bar (max) temperature : -20....+180°C Speed: 3000 r.p.m





Single Coil Spring seal

Face Materials	Carbon, Ceramic, Tungsten Carbide, Silicon Carbide, Lecrolloy
Metal Parts	AISI SS 316, AISI SS 304, HASTELLOY-C, ALLOY-20
Seal Elastomer	Viton, EPDM, Silicon, Aflas, GFT, Karlez, FEP, TTV, PTFE
Applications	Crystallizing Slurry, Suspended Solids Slurry, Saturated Chemical Slurry, General Chemical Slurry
Operating Limits	Shaft Diameter d1 :12....100mm Pressure p : 12 bar (max) temperature : -20....+180°C Speed: 3000 r.p.m

Multi Spring seal

Face Materials	Carbon, Ceramic, Silicon Carbide, Tungsten Carbide
Metal Parts	AISI SS 316, AISI SS 304, HASTELLOY-C, ALLOY-20
Seal Elastomer	Viton, EPDM, Silicon, Aflas, PTFE, GFT, Karlez, FEP, TTV
Applications	Light Hydrocarbons, Corrosive Services, Acids & Alkalies, Petrochemicals etc.
Operating Limits	Shaft Diameter d1 :20....100mm Pressure p : 20 bar (max) temperature : +180°C Speed: 3000 r.p.m



PTFE Bellow seal

Face Materials	GFT, Ceramic, Silicon Carbide, CFT
Metal Parts	AISI SS 316, AISI SS 304, HASTELLOY-C, ALLOY-20
Seal Elastomer	PTFE
Applications	Extremely Corrosive Services
Operating Limits	Shaft Diameter d1 :18....100mm Pressure p : 06 bar (max) temperature : -30....+120°C Speed: 3000 r.p.m



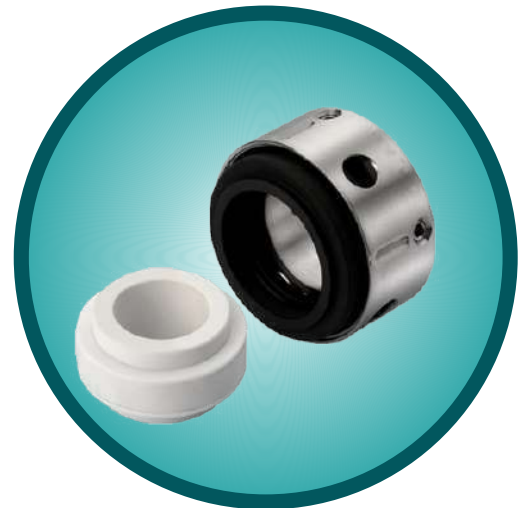


Ptfe Bellow With Replaceable Face

Face Materials	GFT, Ceramic, Silicon Carbide, CFT
Metal Parts	AISI SS 316, AISI SS 304, HASTELLOY-C, ALLOY-20
Seal Elastomer	PTFE
Applications	Extremely Corrosive Services
Operating Limits	Shaft Diameter d1 :18....100mm Pressure p : 06 bar (max) temperature : -30....+120°C Speed: 3000 r.p.m

Reverse Balance Multi Spring Seal

Face Materials	Carbon, Ceramic, Silicon Carbide, Tungsten Carbide
Metal Parts	AISI SS 316, AISI SS 304, HASTELLOY-C, ALLOY-20
Seal Elastomer	Viton, EPDM, TTV, FEP and FKM
Applications	Light Hydrocarbons, Corrosive Services, Acids & Alkalies, Petrochemicals etc.
Operating Limits	Shaft Diameter d1 :12....70mm Pressure p : 08 bar (max) temperature Upto....+120°C Speed: 3000 r.p.m



Metal Bellow Seal

Face Materials	Carbon, Silicon Carbide, Tungsten Carbide.
Metal Parts	AISI SS 316, AISI SS 304, Carpenter 42 Hast- C, Am350, Inconel
Seal Elastomer	Grafoil, Viton, CFT, KARLEZ.
Applications	Chemicals, Petrochemical, Refinery, Corrosive Chemical, Extreme Hot Media.
Operating Limits	Shaft Diameter d1 :25....100mm Pressure p : 25 bar (max) temperature : -70....+350°C Speed: 3000 r.p.m





Grundfos Seal

Face Materials	Carbon, Ceramic, Silicon Carbide, Tungsten Carbide
Metal Parts	AISI SS 316, AISI SS 304
Seal Elastomer	Viton, EPDM, Nitrile
Applications	Slurry pump, Pulp & paper, Sludge & Syrup pump, Chemical, Petrochemical & Refinery
Operating Limits	Shaft Diameter d1 :12....22mm Pressure p : 05 bar (max) temperature : -45....+180°C

Single Spring Seal

Face Materials	Carbon, Ceramic, Tungsten Carbide, Silicon Carbide, Lecrolloy
Metal Parts	AISI SS 316, AISI SS 304, HASTELLOY-C, ALLOY-20
Seal Elastomer	Viton, EPDM, Silicon, Aflas, GFT, Karlez, FEP, TTV, PTFE
Applications	Crystallizing Slurry, Suspended Solids Slurry, Saturated Chemical Slurry, General Chemical Slurry
Operating Limits	Shaft Diameter d1 :12....100mm Pressure p : 12 bar (max) temperature : -20....+180°C Speed: 3000 r.p.m



Single Cartridge Seal



Face Materials	Carbon, Tungsten Carbide, Silicon Carbide
Metal Parts	AISI SS 316, AISI SS 304, Carpenter 42
Seal Elastomer	Viton, EPDM, Silicon, Aflas, PTFE, GFT, Karlez, FEP, TTV
Applications	Slurry pump, Pulp & paper, Sludge & Syrup pump, Chemical, Petrochemical, Refinery, Light Hydrocarbons.
Operating Limits	Shaft Diameter d1 :18....100mm Pressure p : 5....35 bar (max) temperature : -20....+260°C Speed : 3000 r.p.m





Dual Cartridge Seal

Face Materials	Carbon, Silicon Carbide, Tungsten Carbide, Lacroloy
Metal Parts	AISI SS 316, AISI SS 304, HASTELLOY-C, ALLOY-20 etc.
Seal Elastomer	Viton, EPDM, Silicon, Aflas, PTFE, GFT, Karlez, FEP, TTV
Applications	Slurry pump, Pulp & paper, Sludge & Syrup pump, Chemical, Petrochemical & Refinery
Operating Limits	Shaft Diameter d1 :18...100mm Pressure p : 05...35 bar (max) temperature : -20.....260°C Speed: 3000 r.p.m

Metal Bellow Cartridge Seal

Face Materials	Carbon, Silicon Carbide, Tungsten Carbide.
Metal Parts	AISI SS 316, AISI SS 304, Carpenter 42 Hast- C, Am350, Inconel
Seal Elastomer	Grafoil, Viton, CFT, KARLEZ.
Applications	Chemicals, Petrochemical, Refinery, Corrosive Chemical, Extreme Hot Media.
Operating Limits	Shaft Diameter d1 :25...100mm Pressure p : 25 bar (max) temperature : -70....+350°C Speed: 3000 r.p.m



Slurry Seal



Face Materials	Carbon, Silicon Carbide
Metal Parts	SS 316, SS 304
Seal Elastomer	Viton, EPDM, Silicon, Aflas, PTFE, GFT, Karlez, FEP, TTV
Applications	Slurry pump, Pulp & paper, Sludge & Syrup pump, Chemical, Petrochemical & Refinery
Operating Limits	Shaft Diameter d1 :18....100mm Pressure p : 5.....25 bar (max) temperature : -40....+260°C Speed : 3000 r.p.m



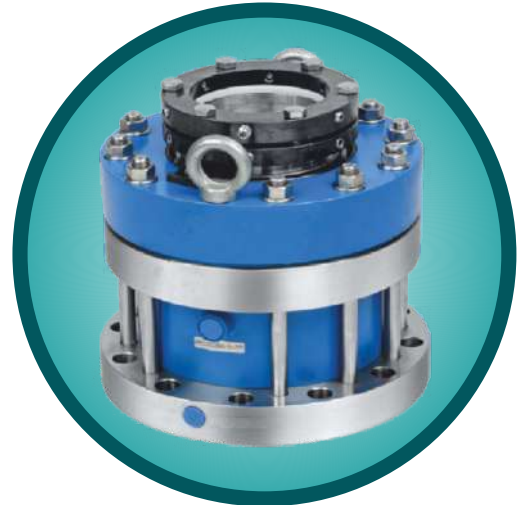


Dry Running Seal

Face Materials	Carbon , Silicon Carbide, Tungsten carbide, Ceramic
Metal Parts	AISI SS 316, AISI SS 304, MS Etc.,
Seal Elastomer	Viton, EPDM, Silicon, Aflas, PTFE, GFT, Karlez, FEP, TTV
Applications	Corrosive Chemicals, General Light Chemicals, Food Product, Pharmaceutical Products.
Operating Limits	Shaft Diameter d1 :15....150mm Pressure p : 08 bar (max) temperature : -30.....150°C Speed: 3000 r.p.m

Dual Agitator Seal

Face Materials	Carbon, Silicon Carbide, Tungsten Carbide, Lacroloyl, Ceramic.
Metal Parts	AISI SS 316, AISI SS 304, HASTELLOY-C, ALLOY-20 etc.
Seal Elastomer	Viton, EPDM, Silicon, Aflas, PTFE, GFT, Karlez, FEP, TTV
Applications	General Chemicals & It's Vapours, Petrochemicals & It's Vapours, Light Hydrocarbons & It's Vapours, Pharmaceutical & Industries, Paper Industries Etc.
Operating Limits	Shaft Diameter d1 :25....200mm Pressure V.....30 bar (max) temperature : -30....+260°C Speed: 3000 r.p.m



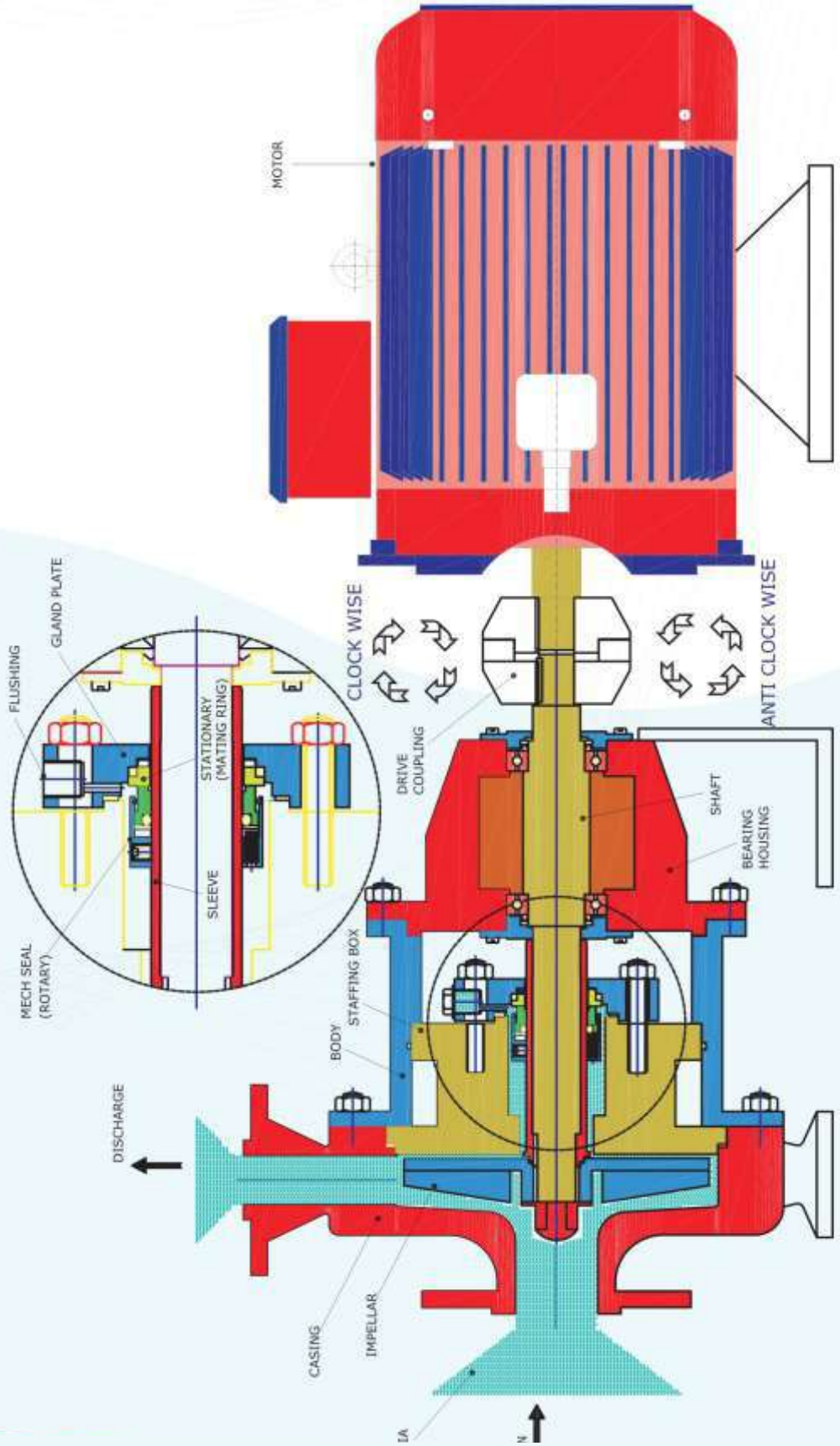
Thermosyphon Vessel

Metal Parts	Thermosyphon Shell : Carbon Steel / SS 304 / SS 316 / MS Cooling Coil : SS 304 / SS 316
Operating Limits	20 Pressure Limit : 20 bar 40 Pressure Limit : 40 bar Temperature (max) : 200°C



PUMP PROCESS SYSTEM

SEAL FITMENT & PUMP PROCESS SYSTEM





ICONIC ENGINEERING

Mfg. Mechanical Seals ,Rotary Joint, Sealing System & Rubber Products .

Head Office & Factory:-
Unit No 01,Shaikh Saheb Compound, R. S Marg,
Pathanwadi Malad East,Mumbai-400097



9167844313/ 9699686236



inquiryiconicengg@gmail.com



www.iconicengg.com