



ICONIC ENGINEERING

Finest Quality & Reliable Performance



Mfg. Mechanical Seals ,Rotary Joint, Sealing System & Rubber Products .



INDUSTRIAL WE SERVE

- » Pharmaceutical
- » Chemical
- » Petrochemical
- » Oil & Gas
- » Refinery
- » Power Fertiliser
- » Pulp & Paper
- » Textile
- » Marine
- » Foods & Beverages



Introduction

Iconic Engineering Est in the Year 2011 is engaged in the Design Manufacture & installation of Mechanical seal Rotary Joint(Roto Coupling , Rotary Union) & Pharma Rubber Products and associated products to cater the growing needs of process industries

About Us

We are one of the Leading Providers of industrial sealing technology on national & international Stage. Our Products and Comprehensive Service are used wherever the key requirements are reliability and safety Iconic Engineering Design and Manufacture Mechanical Seal, Rotary Joint Pharma Rubber and associated product mainly for the Oil & gas, Chemical, Pharmaceutical, Pulp & Paper, Power, Food, Textile, Petrochemical, Steel, Marine, and many more industrial application Iconic Engineering can help relieve stress reduce the life cycle cost Associated with the most important aspect of plant operation Iconic Engineering has a longstanding tradition of provided Mechanical Seal, Rotary Joint, Pharma Rubber & sealing Service that are trusted by the industry.

Quality

We mean what we say when we talk about quality. Designing and manufacturing Mechanical Seal, Rotary Joint, & pharma Rubber Products auxiliaries that exceeds our customer expectations is an important part of our dedication of total quality

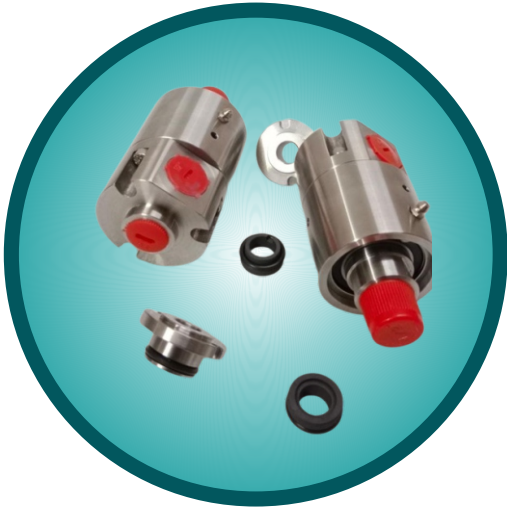
Service

Staff is available to resolve customer problems. Our Engineers have great experience and technical knowledge of Mechanical Seal Rotary Joint, Seal Support System, Rotating equipment & Pharma Rubber Products. Which enables them to quickly Point out the root cause accurately



ROTARY JOINT

All Types of Rotary Joint, Rotary Union & Roto Seal Couplings.



Rotary Joint Water Application

Face Materials	Carbon, Silicon Carbide, Tungsten Carbide, Stellite
Metal Parts	SS 316, SS 304, Brass
Seal Elastomer	Viton, Silicon, TTV, PTFE.
Operating Limits	SIZE : 3/8" To 6.0" Pressure : 15 Bar temperature : 150° C Speed: 3500 RPM



Rotary Joint for Air Application

Face Materials	Carbon, Silicon Carbide, Tungsten Carbide, Stellite,
Metal Parts	Aluminium
Seal Elastomer	Viton, PTFE.
Operating Limits	SIZE : 3/8" To 6.0" Pressure : 10 Bar Air, 0.07 Bar to 7 Kpa Vacuum Temperature : 150° C Speed: 2800 RPM



ROTARY JOINT

All Types of Rotary Joint, Rotary Union & Roto Seal Couplings.

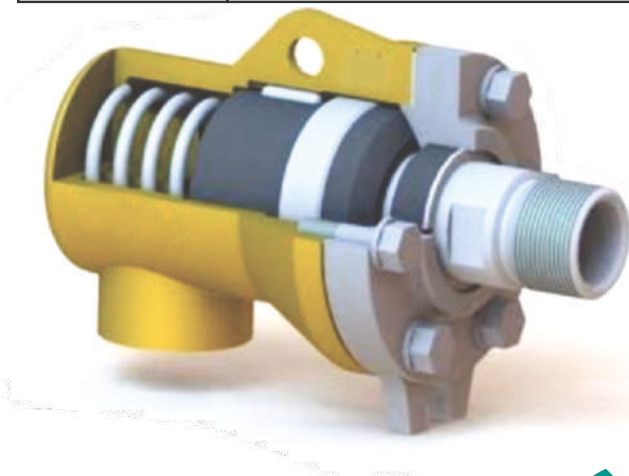


Hydraulic Rotary Joint

Metal Parts	SS 316, SS 304, Brass, Gun Metal.
Seal Elastomer	Viton, PTFE.
Operating Limits	SIZE : 3/8" To 6.0" Pressure : 400 Bar temperature : 150° C Speed: 1500 RPM

Rotary Joint for Hot Oil & Thermic Fluid

Face Materials	Antimony Carbon.
Metal Parts	MS, SS 304
Seal Elastomer	Grafoil Gasket, Asbestos Gasket.
Operating Limits	SIZE : 0.5" to 6.0" Pressure : 07 Bar Temperature : 350° C Speed: 750 RPM



ROTARY JOINT

All Types of Rotary Joint, Rotary Union & Roto Seal Couplings.



Multi Port Rotary Joint

Metal Parts	SS 316, SS 304, Brass, Gun Metal.
Seal Elastomer	Viton, PTFE.
Operating Limits	SIZE : 3/8" To 6.0" Pressure : 400 Bar temperature : 150° C Speed: 1500 RPM

Coolant Rotary Joint

Rotating Unions for continuous Coolant Service Features:

- *Single passage for coolant or MQL*
- *Closed seals for transfer line and similar applications*
- *Full-flow design has no obstructions to trap chips or debris*
- *Bearing-supported with threaded rotor for easy installation*
- *Deep Groove radial ball bearings for smooth operation*
- *Labyrinth system and large vents to protect ball bearings*
- *Balanced mechanical seals made from silicon carbide for long life even under difficult operating conditions*
- *Anodized aluminum housing resists corrosion*

Operating Parameters:

- Media : Water-based Coolant : MQL (oil mist) up to 10 bar (145 psi)
- Filtration : ISO 4406 Class 17/15/12,60 micron
- Max. Speed : 15,000 min⁻¹ : 15000 rpm
- Max. Pressure : 105 bar : 1520 psi
- Max. Flow : 20l/min : 5.3 gpm
- Max. Temp. : 160°F : 71°C








ICONIC ENGINEERING

Mfg. Mechanical Seals ,Rotary Joint, Sealing System & Rubber Products .

Head Office & Factory:-
Unit No 01,Shaikh Saheb Compound, R. S Marg,
Pathanwadi Malad East,Mumbai-400097

-  9167844313/ 9699686236
-  inquiryiconicengg@gmail.com
-  www.iconicengg.com